

'TOOTH' OR DARE

Jennifer Mathis,
DVM, CVPP, DAVDC

Vanessa Huizar,
LVT, VTS Dentistry

ALL THINGS DENTISTRY GAMIFIED

Which team are you on?

Web: [pollev.com/
vetceyoulluse.com](http://pollev.com/vetceyoulluse.com)

or Text
vetceyoulluse
to 37607



ENAMEL

DENTIN

PULP

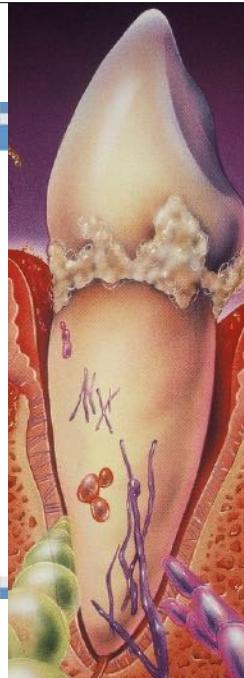
T/F: Necrotic bone responds to antibiotic therapy.

Perio Endo

True

False

Start the presentation to see live content. Still no live content? Install the app or get help at PolEv.com/app



T/F: Decreased appetite is a common symptom of dental disease.

Perio Endo



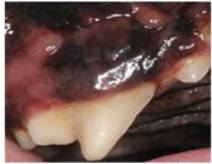
True

False

Start the presentation to see live content. Still no live content? Install the app or get help at PolEv.com/app

T/F: The level of calculus should be used to judge the need for professional therapy, not the degree of gingival inflammation.

Perio Endo



True False

Start the presentation to see live content. Still no live content? Install the app or get help at PollEv.com/app

What is a curette?

Perio Endo

A sharp margined instrument for cleaning above the gumline

A sharp margined instrument for cleaning the sulcus

A dental instrument to hold tissue

Who cares? We don't use them.

Start the presentation to see live content. Still no live content? Install the app or get help at PollEv.com/app



CURETTE FOR THE SULCUS

13/14 by hand H3 with Newtron



Ultrasonic scalers clean effectively through all of the following methods EXCEPT:

Perio Endo

Oscillation of the tip near the calculus

Cavitation = sound waves energize the water spray

Tip contacts the tooth with light strokes

Tip is forced against calculus like a scaler

Start the presentation to see live content. Still no live content? Install the app or get help at PollEv.com/app



IMPROVE CLEANING

Use light 'paint brush' strokes

Wearing away of 1mm of ultrasonic scaler tips reduces efficiency by ____%; 2mm reduces efficiency by ____%. Change tips to save time/improve cleaning.

Perio Endo

5%; 10%

15%; 30%

25%; 50%

70%; 90%

25% efficiency loss is 50% more time; 50% efficiency loss is 100% more time.

ie if it take 20 minutes to clean when new, it will take 30 minutes when 1mm is lost and 40 minutes by the time you get to 2mm.

Start the presentation to see live content. Still no live content? Install the app or get help at PollEv.com/app

According to WSAVA guidelines, the minimum required equipment for veterinary dental procedures in the USA (Tier 3 country) includes all EXCEPT:

Perio Endo

Good lighting

Magnification

Digital dental radiology

Curing light for restorations

Start the presentation to see live content. Still no live content? Install the app or get help at PollEv.com/app

1 2 3

Which is NOT an appropriate treatment plan when finding a malocclusion?

Perio Endo

extraction

orthodontics (for pain treatment/prevention), not cosmetic reasons

crown amputation and vital pulp therapy ('mini endo')

watch it

Start the presentation to see live content. Still no live content? Install the app or get help at PollEv.com/app



01

MAL 0 - normal

MAL 1 - specific teeth

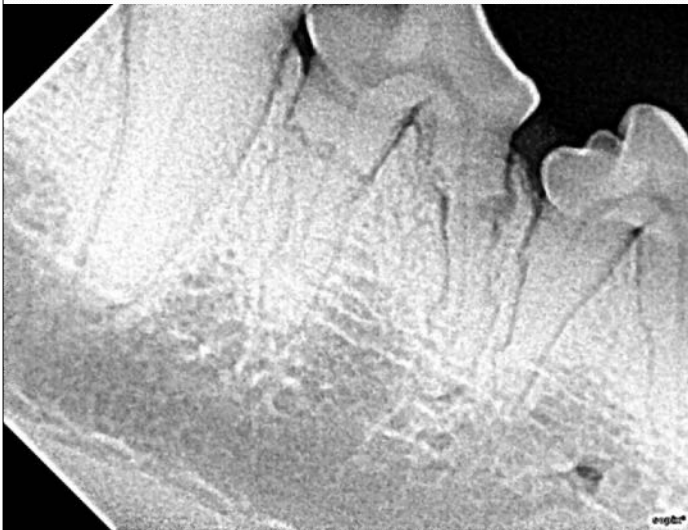
MAL 2 - overbite

MAL 3 - underbite

THESE ARE OR WILL BE PAINFUL

SEQUELA: DEAD TEETH, SOFT TISSUE TRAUMA (PAIN), PERIO DISEASE/POCKETS, LIP ENTRAPMENT, ETC...

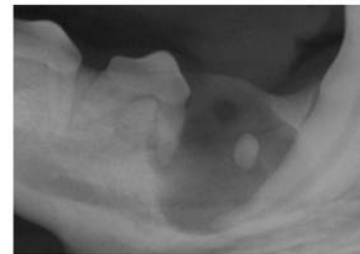
ROOT RESORPTION



- External
- Root only
- If at neck or crown, must extract, then is painful

It is important to radiograph missing teeth as it has been reported that ____% of dogs have dentigerous cysts in sites of missing teeth.

Perio Endo



0 30% 30% 13% 30%

Start the presentation to see live content. Still no live content? Install the app or get help at PollEv.com/app

What is the most common iatrogenic complication of tooth extraction?

Perio Endo


retained tooth root

jaw fracture

ocular damage

osteomyelitis

Start the presentation to see live content. Still no live content? Install the app or get help at PollEv.com/app




69% of cats get Tooth Resorption

Only 7% of the cats with TR had evidence on awake exam.

Radiograph.
radiograph.
radiograph.
radiograph.

RADIOGRAPH: 2/3 OF TOOTH UNDER GUMLINE

NATIONAL AVERAGE FOR SET OF INTRAORAL RADS = \$75; 50%+ HAVE PATHOLOGY TO TREAT

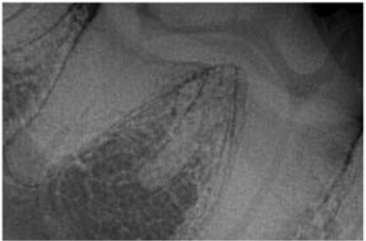


LINE

NATIONAL A

A recent study reported that ____% of extracted carnassial teeth in dogs and cats have retained roots.

Perio Endo




0 90% 90% 79% 92%

Start the presentation to see live content. Still no live content? Install the app or get help at PollEv.com/app

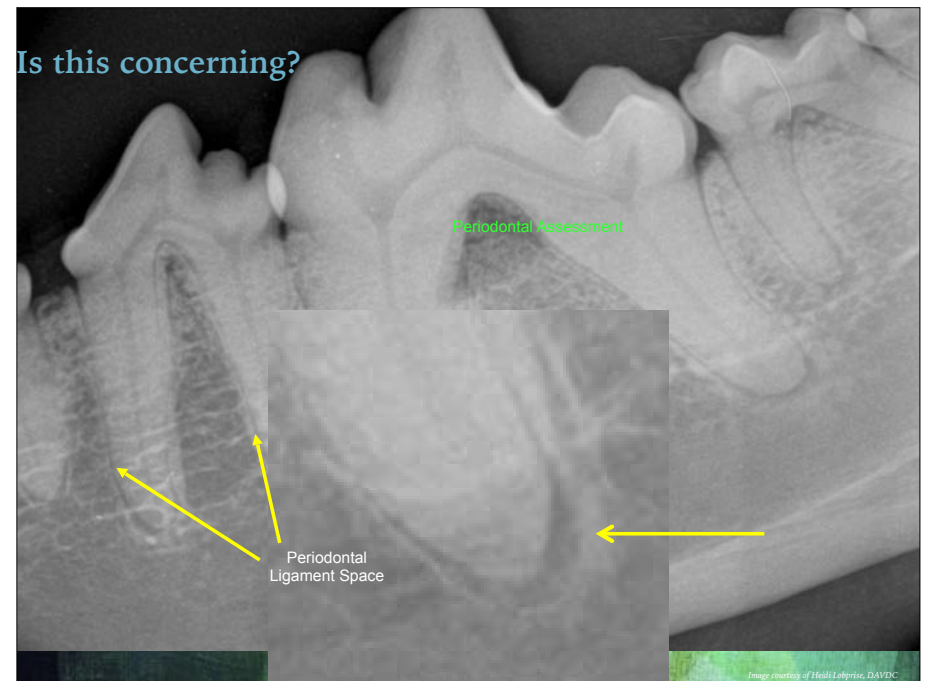
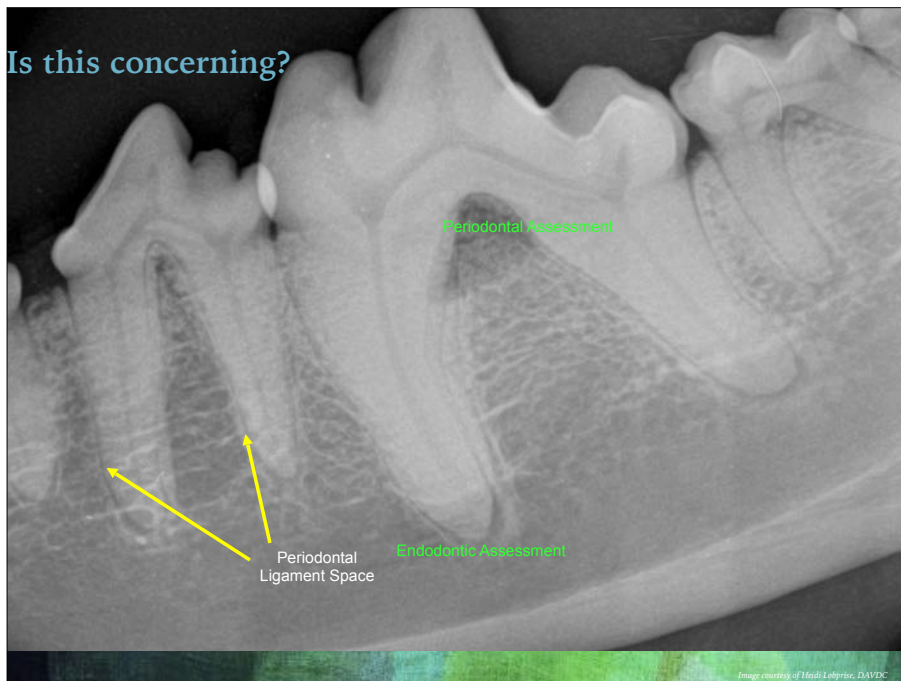
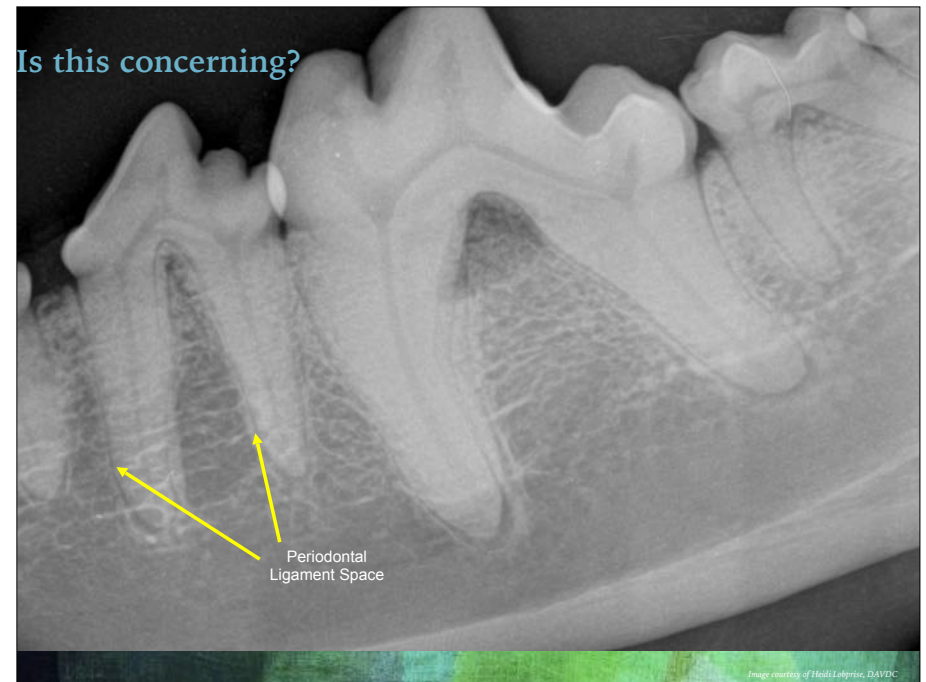
What treatment would you select given this root apex (tip)?

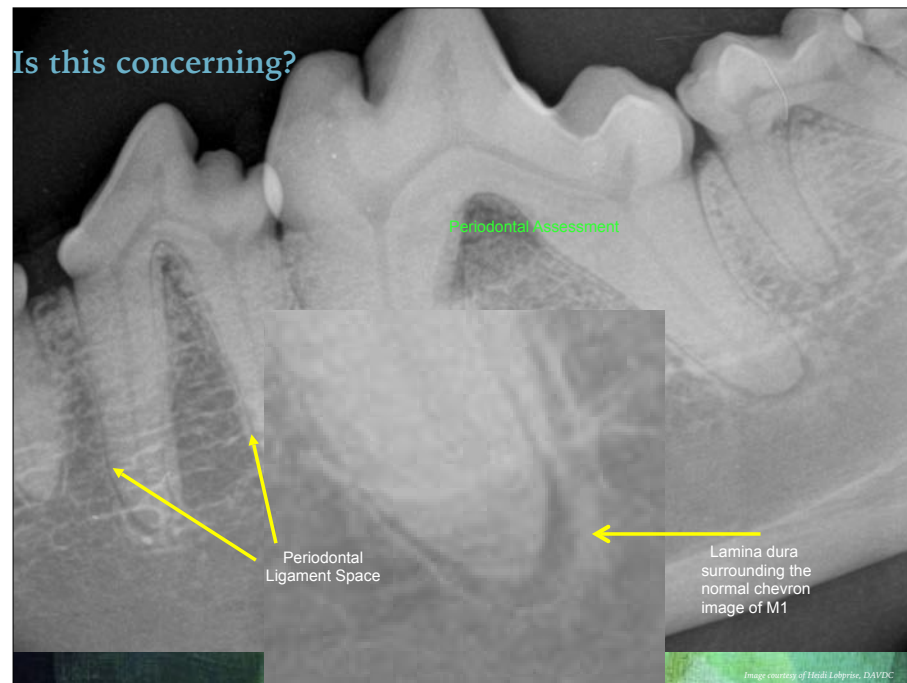
Perio
Endo



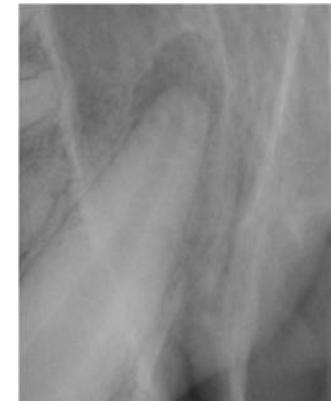
normal
extract
endo

Start the presentation to see live content. Still no live content? Install the app or get help on PollEv.com/app





NORMAL CHEVRON VS ABNORMAL



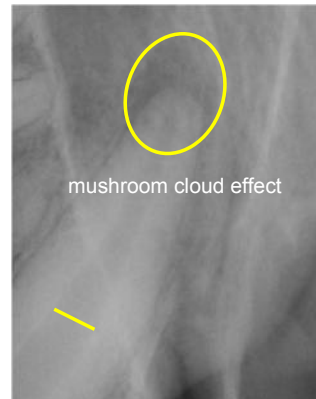
Images courtesy of Kipp Wingo, DAVDC

NORMAL CHEVRON VS ABNORMAL

NORMAL



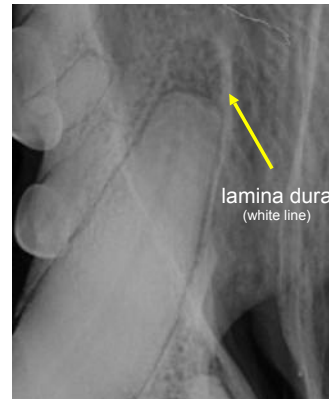
ENDODONTIC DISEASE



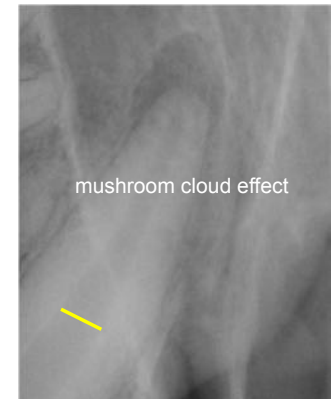
Images courtesy of Kipp Wingo, DAVDC

NORMAL CHEVRON VS ABNORMAL

NORMAL



ENDODONTIC DISEASE



Images courtesy of Kipp Wingo, DAVDC

Which of the following is the best choice for formation of new bone within an alveolus following extraction?

Perio Endo

Blood

ReGumVet will support the blood clot and help more

Doxycycline

Consil

Granulation
tissue

Start the presentation to see live content. Still no live content? Install the app or get help at [PollEv.com/app](https://www.PollEv.com/app)

BLOOD HAS ALL OF THE PRODUCTS TO MAKE BONE

- Unless
 - Large defect or
 - vertical bone loss



Which flap has the most blood supply and least suturing?

Perio Endo

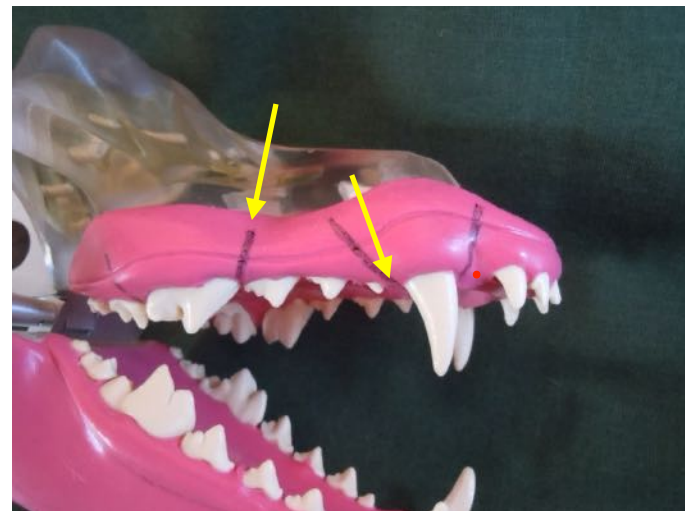
Square
flap

Triangle
flap

Envelope
flap

Start the presentation to see live content. Still no live content? Install the app or get help at [PollEv.com/app](https://www.PollEv.com/app)

DON'T USE VERTICAL RELEASING INCISIONS UNLESS NEEDED



The least possible tooth brushing frequency to have any significant benefit:



Start the presentation to see live content. Still no live content? Install the app or get help at [PollEv.com/app](https://www.poll-ev.com/app)

Dental Home Care

There are many things you can do to help delay the buildup of plaque on your pet's teeth. *None of these treatments removes the tartar (mineralized) that is already present.* All work better with a clean slate.

Key Points:

- Home care can be active or passive.
- Active home care is 3x more effective than passive.
- It has been shown that active homecare done daily is beneficial, yet brushing/wipes done less than 3 times weekly is equal to not doing it at all.
- VOHC products have proven efficacy; look for the seal.

- Home care slows the changes by 20-60%, thus does not replace the need for annual anesthetic dental procedures.
- In a study of pets 1yr after an anesthetic dental procedure, those that had daily active homecare had 15% likelihood of a problem in 1yr, while those that had no or irregular homecare had 45% chance of a problem. That's a 3-fold difference!
- In a study of 20lb dogs only aged 1-7yrs, with owners declining to do home care, 98% progressed to bone loss in 60 weeks and it was 6 weeks faster for each year of age.
- In order to avoid tooth fracture, all pets should have nothing without flex for life (no bones, hooves, nylabones, antlers, and no nonflexible rawhides).

- In order to avoid tooth fracture, all pets should have nothing without flex for life (no bones, hooves, nylabones, antlers, and no nonflexible rawhides).
- Choose toys that are bendable, compressible or can indent with your thumbnail without the nail bending.

The most effective homecare you can do is brushing/wipes daily or every other day.

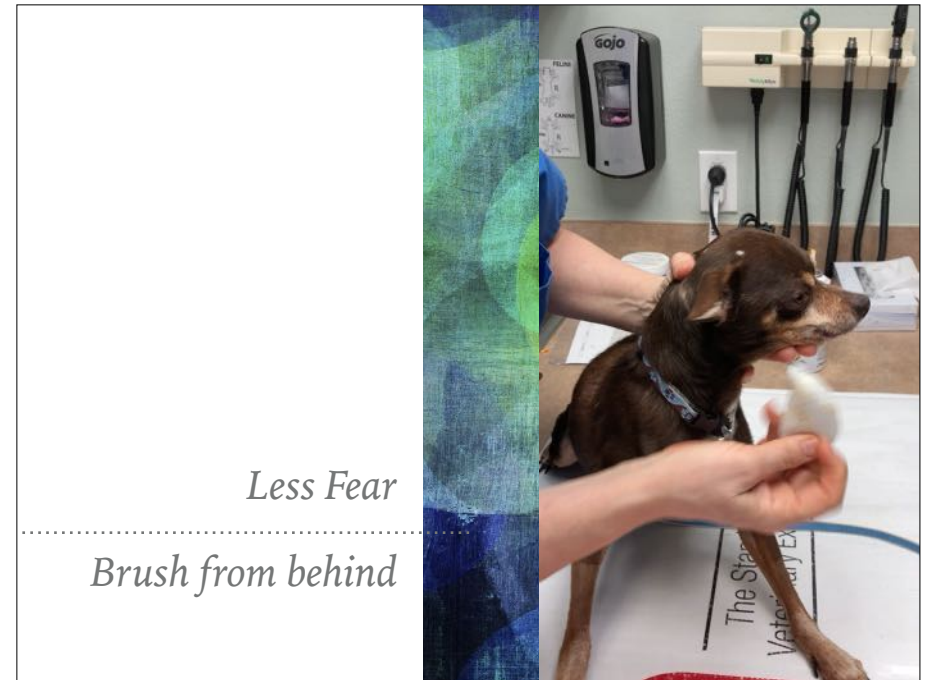
Active Home Care

Brushing/Wipes:

Of course, just as it is for us, tooth brushing is the best single method of home dental care for your pet. Brushing should be done with a finger toothbrush or a dental wipe as they are most reliable at reaching the gingival sulcus (the space between the gum and the tooth).

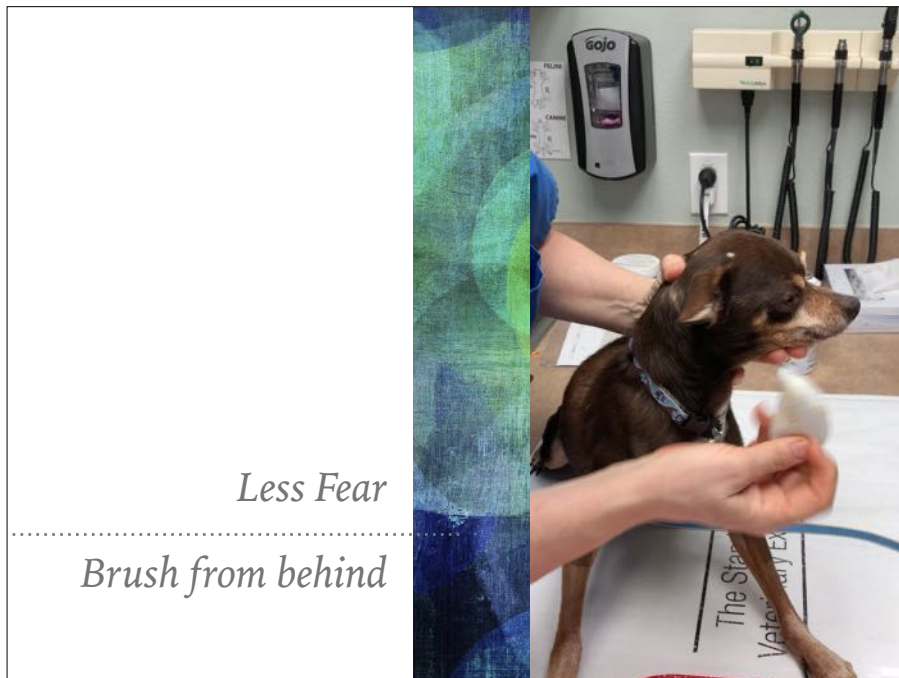
MaxiGuard wipes have a textured surface that can trap and show the plaque you've removed by brushing. They contain a tasteless zinc solution that aids in soft tissue healing. Using wipes takes less than a minute per day and is nearly 3 times more effective than passive home care choices.

Adding toothpaste to the wipe can add a treat action and additional benefit. VOHC PetSmile beef, chicken, or cheese flavor toothpaste has been shown to reduce plaque by up to 60%. CET poultry or vanilla mint flavors are other toothpaste tastes that can be tried. These toothpastes are specifically formulated to be safe, effective, and appealing to your dog or cat, and "unlike" people toothpastes, are meant to be swallowed.



Less Fear

Brush from behind



Less Fear

Brush from behind

Check all inappropriate things for pets to chew:

Perio Endo

Bones *Too hard*

Antlers *Too hard*

Nylabones *Too hard*

Tennis Balls *Fuzz is abrasive over time, try Chuck It Ultra balls*

FDA Consumer Health Information
www.fda.gov/consumer

No Bones About It: Bones are Unsafe for Your Dog

The idea that it's natural for dogs to chew on bones is a popular one. However, it's a dangerous practice and can cause serious injury to your pet.




The Risks:

- broken teeth
- mouth injuries
- choking
- intestinal blockage
- constipation
- rectal bleeding
- infections
- death

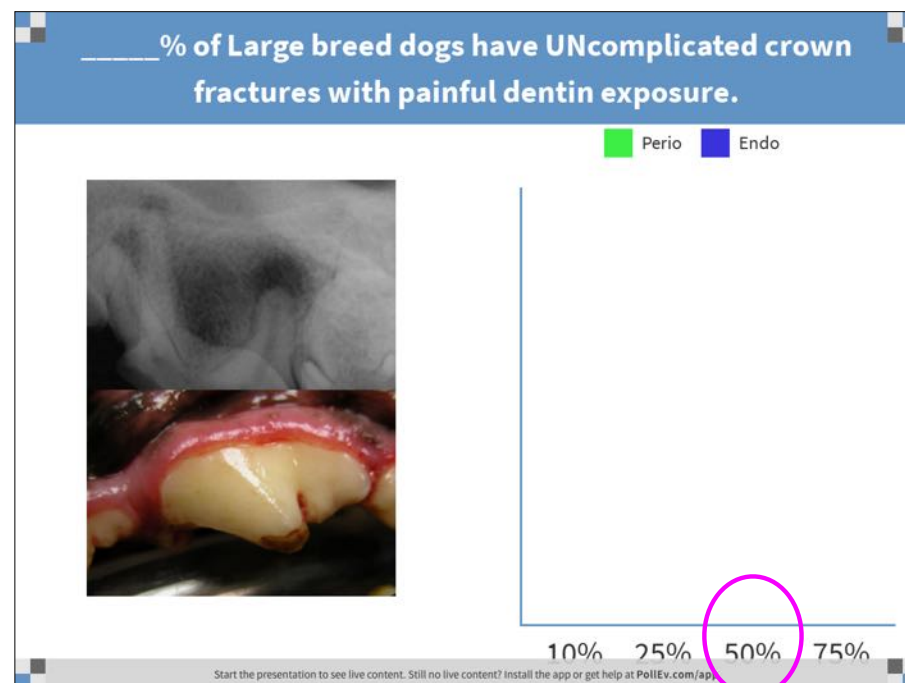
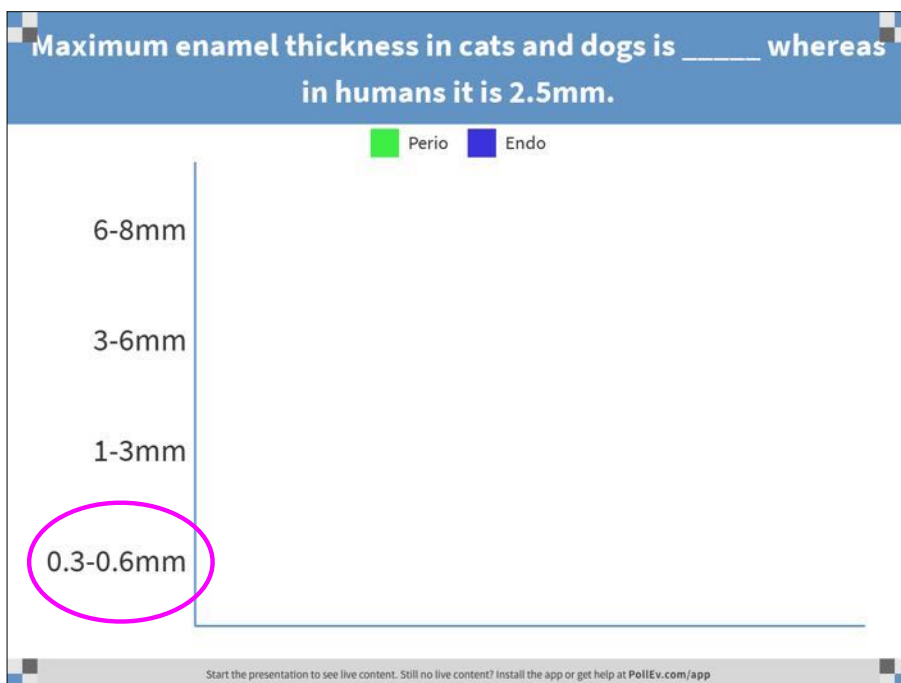
1 / FDA Consumer Health Information / U.S. Food and Drug Administration APRIL 2010

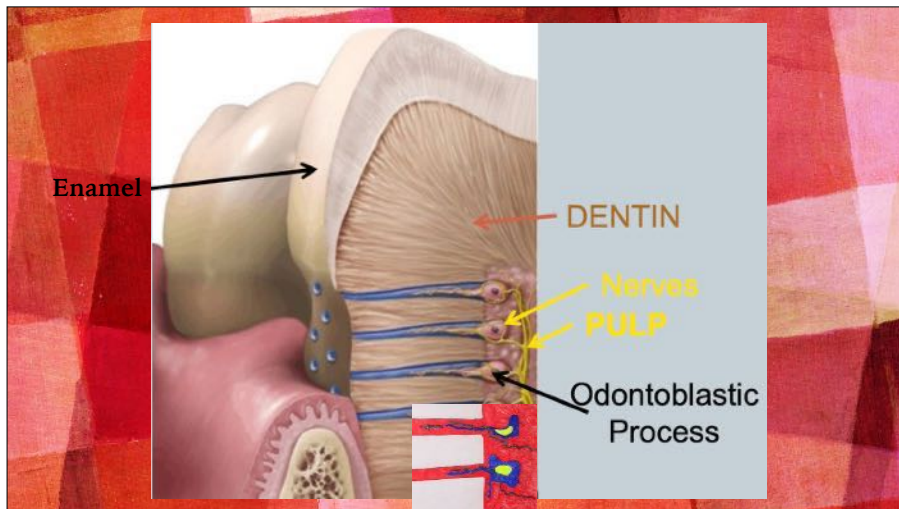
FDA Consumer Health Information
www.fda.gov/consumer

No Bones About It: Bones are Unsafe for Your Dog

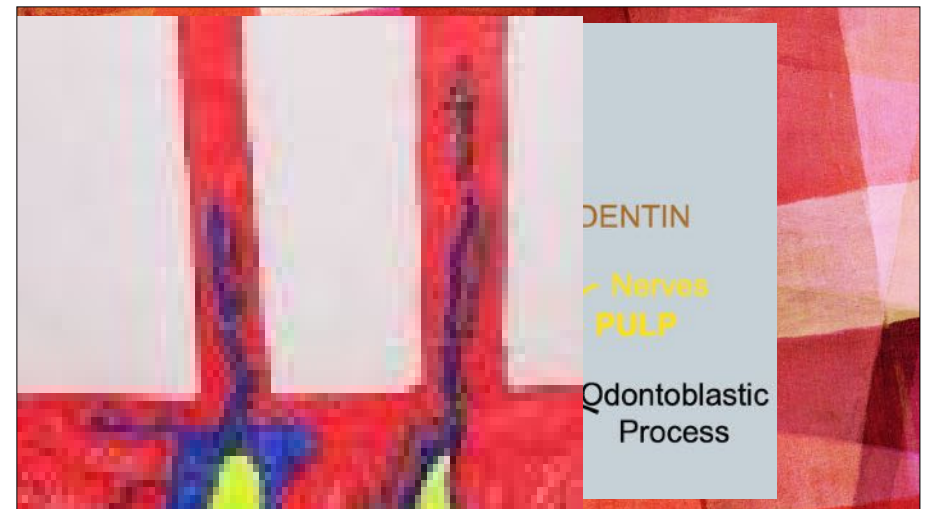


1 / FDA Consumer Health Information / U.S. Food and Drug Administration APRIL 2010





Exposed tubules can be painful



e painful

The most common site for mandibular fracture in a small dogs is ____ which may be due to the tooth size and jaw height differences as compared with large dogs.

Perio Endo

mandibular canines

mandibular first premolar (most common place for dentigerous cyst)

mandibular carnassial

mandibular last molar

Start the presentation to see live content. Still no live content? Install the app or get help at [PollEv.com/app](https://www.PollEv.com/app)

VITICUSGROUP™
WVC ANNUAL CONFERENCE



Images courtesy of Dr. Brooke Niemiec

All of the following systemic consequences of treating dental disease is true EXCEPT:

Perio Endo

A patient can be too old to have anesthesia.

Improvements in periodontal health appear to assist in control of diabetes.

Treating pets that have dental problems is shown to reduce the risk of kidney problems by 23%.

Pets with poor oral health were shown to be 6 times more likely to have heart issues.

Start the presentation to see live content. Still no live content? Install the app or get help at PollEv.com/app

T/F: A cat is more likely to die following general anesthesia instead of a sedation procedure.

Perio Endo



True False

Start the presentation to see live content. Still no live content? Install the app or get help at PollEv.com/app

According to Brodbelt, what is the anesthetic death rate after all types of veterinary procedures in cats?

Perio Endo

10% (1 in 10)

1% (1 in 100)

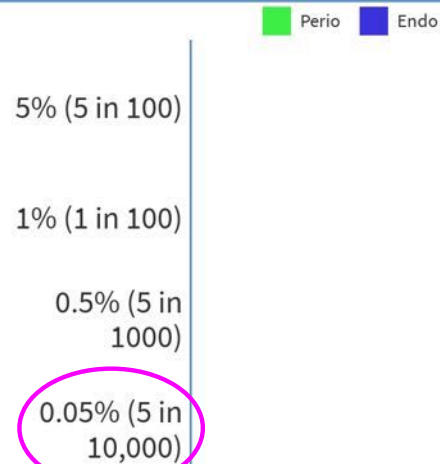
0.1% (1 in 1000)

0.01% (1 in 10,000)

IMHO cats would have half this risk like dogs if quantitative feline NT-proBNP were done (BioNote)

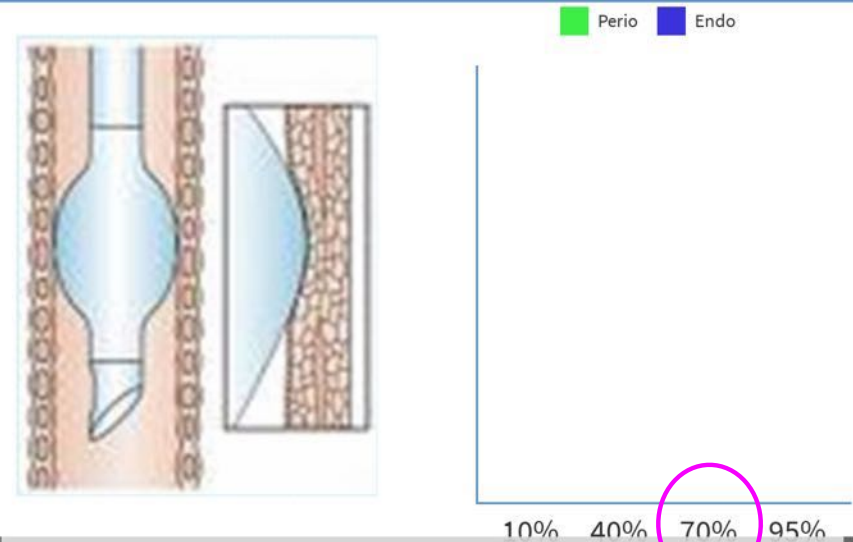
Start the presentation to see live content. Still no live content? Install the app or get help at PollEv.com/app

According to Brodbelt, what is the anesthetic death rate after all types of veterinary procedures in dogs?



Start the presentation to see live content. Still no live content? Install the app or get help at PollEv.com/app

One study of tracheal tears in cats following anesthesia showed ____% had tears following a dental procedure.



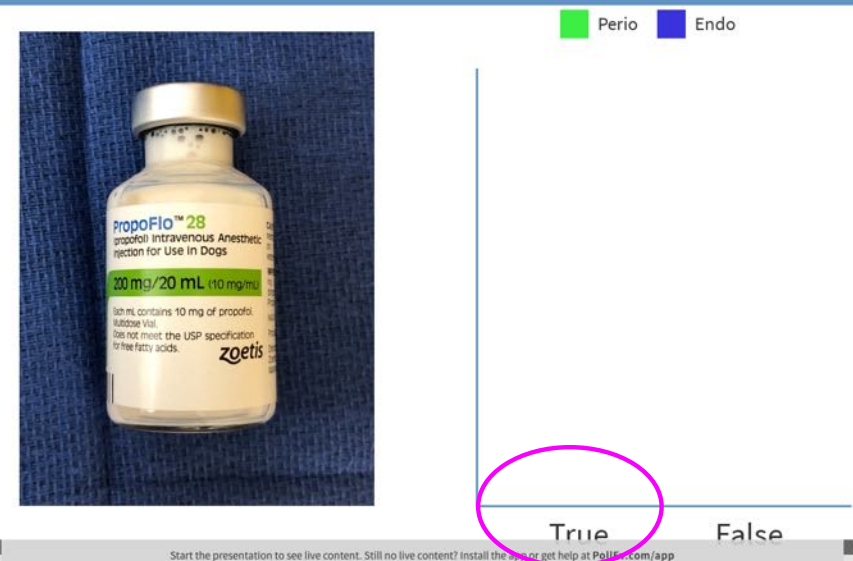
Start the presentation to see live content. Still no live content? Install the app or get help at PollEv.com/app

_____ is a way to minimize feline tracheal tears following anesthesia.

- Perio Endo
- Use the largest size endotracheal tube that fits comfortably
 - Lubricate the ETT balloon lightly
 - Disconnect the airway during patient turning/minimize flipping
 - Lightly inflate the cuff, pack the pharynx, and use suction

Start the presentation to see live content. Still no live content? Install the app or get help at PollEv.com/app

T/F: Propofol given over 90 seconds instead of 45 seconds will allow one to administer half the volume.



Start the presentation to see live content. Still no live content? Install the app or get help at PollEv.com/app

Which is an appropriate mouth gag/prop to prevent blindness due to maxillary artery occlusion during dental procedures?

Perio Endo

A spring loaded gag

An inflexible syringe barrel/needle cover propping the mouth open to 42 mm

A soft perm roller propping the mouth open up to 30mm in cats


A fixed size prop that is not moved throughout the procedure

Start the presentation to see live content. Still no live content? Install the app or get help at [Poliev.com/app](https://poliev.com/app)



LESS RIGID PROP PREFERRED

Maximum safe opening between upper and lower incisors is 3cm



What is this?

Perio Endo

epulis

gingival hyperplasia

cannot say without histopath

Who cares? It's not a problem

Start the presentation to see live content. Still no live content? Install the app or get help at [Poliev.com/app](https://poliev.com/app)



GINGIVAL ENLARGEMENT

LOTS OF VERY SIMILARLY LOOKING TISSUE WITH LOTS OF DIFFERENT DIAGNOSES

GE
PYO
GH
FFH
POF
CAA
PCT
SCC
FS

The risk of squamous cell carcinoma is reported to be higher in all of the following group EXCEPT:

Perio Endo

Shelter pets

Pets living in cities

Cats wearing flea collars

Cats living in smoking households

Start the presentation to see live content. Still no live content? Install the app or get help at [PollEv.com/app](https://www.pollEv.com/app)

T/F: Un- and undertreated dental disease has serious impacts on the welfare of the patient, thus is an UNacceptable condition for any DVM to leave unaddressed.

Perio Endo



True

False

Start the presentation to see live content. Still no live content? Install the app or get help at [PollEv.com/app](https://www.pollEv.com/app)

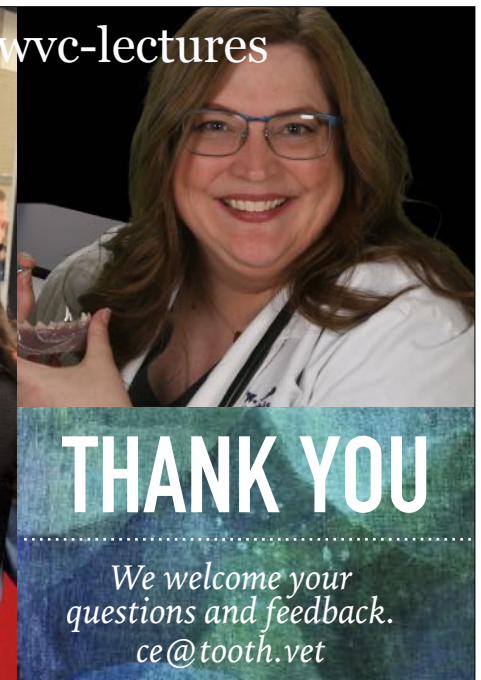
ADDITIONAL RESOURCES

tooth.vet/wvc-lectures

Vet CE You'll Use on Facebook



tooth.vet/wvc-lectures



THANK YOU

We welcome your questions and feedback.
ce@tooth.vet